

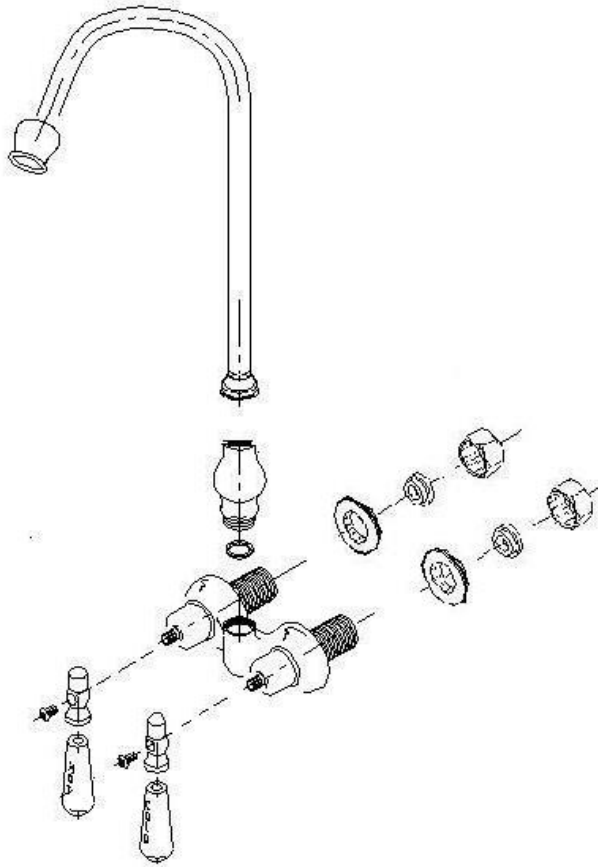
## Installation Information

### Item #P0126

### Leg Tub Gooseneck Faucet, 3 3/8" Centers

Warranted only if installed by a qualified licensed plumber. Use Teflon tape on all threaded connections.

1. Shut off the water supply before installation.
2. Insert the faucet inlets through the 2 holes on the tub, at 3 3/8" centers. Screw the lock nuts onto the threaded shanks and tighten faucet to tub.
3. Attach the spout and tighten the hold down nut to hold in place.
4. Attach handles using the handle screws provided.
5. Make no adjustments to valves or valve stems. They are tested at the factory for optimum performance.



**Leg tub filler outlet shall be installed minimum 2" above the flood level rim of the fixture**