

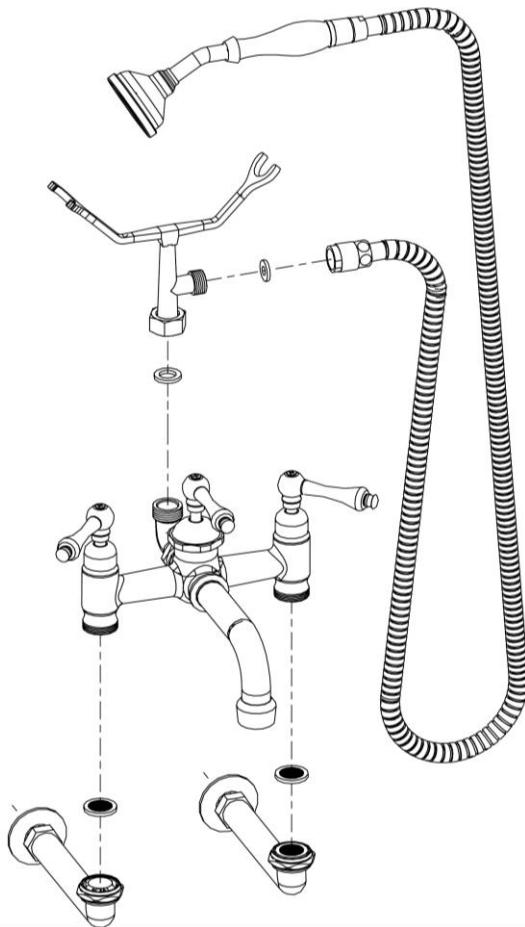
Installation Information

Item #P1080

Wall Mount British Telephone Faucet, 7" Centers

Warranted only if installed by a qualified licensed plumber. Use Teflon tape on all threaded connections.

1. Shut off the water supply valves before installation.
2. Rough-in $\frac{1}{2}$ " IPS (Iron Pipe Size) nipples, $\frac{1}{2}$ " past the finished wall, 7" on center.
3. Thread the faucet couplers onto the $\frac{1}{2}$ " IPS nipples, using Teflon tape on the threads.
4. Tighten coupler nuts to the body of faucet.
5. Thread handheld cradle to faucet body elbow, using Teflon tape on all threads.
6. Thread on the vacuum breaker to the outlet of the handheld shower cradle. Then attach the nut end of the hose to the vacuum breaker and tapered end of the hose to the handheld shower, using washers included.
7. Make no adjustments to valves or valve stems. They are tested at the factory for optimum performance.



Parts Included:

- Faucet Body w/Handles, 7" Centers
- Wall Mount Couplers
- Handheld Shower w/Hose
- Inlet Bracket/Cradle

WALL MOUNT SHOWERS AND FAUCETS

ITEM #	Extension from wall to Spout or Head	Body C to C	Total height from Inlet	Bottom of Head or spout to Inlet
P1080*	12 1/2"	7"	10"	N/A