

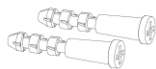
## Installation Information

### Item: Towel Bar, T.P. Holder, Hook and Towel Ring

### Instructions for mounting towel bar, towel ring & toilet paper holder

**For a towel bars and TP Holders:** After installing the first set of mounting hardware and trim, insert the bar for measuring the distance needed to install the second set of mounting hardware for proper installation.

1. Determine on wall where to place mounting hardware. Make sure there is proper wall support.
2. Determine the proper width measurement needed between ends when installing a towel bar or toilet paper holder.
3. Drill holes and insert screw anchors.
4. Attach the wall bracket with screws provided into the screw anchors.
5. Thread the mounting post into the hole of the wall bracket (you may need to adjust this post in or out, depending on the height of the escutcheon).
6. Slide the escutcheon ring (if applicable) and the escutcheon over the mounting post and hold in place.
7. Insert the escutcheon nut into the escutcheon hole and thread it onto the mounting post.
8. Loosen the set screw on the decorative end post finial so you can slide it over the mounting post end. (position the end post correctly according to the item you are installing).
9. Once the end post is positioned correctly, tighten the set screw.
10. Repeat for other side.



Screw anchors



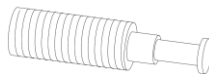
Wall Bracket



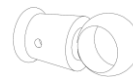
Escutcheon



Screws



Mounting Post



Finial



Allen Wrench